

OPERATE IN THE **SUCCESS ZONE**

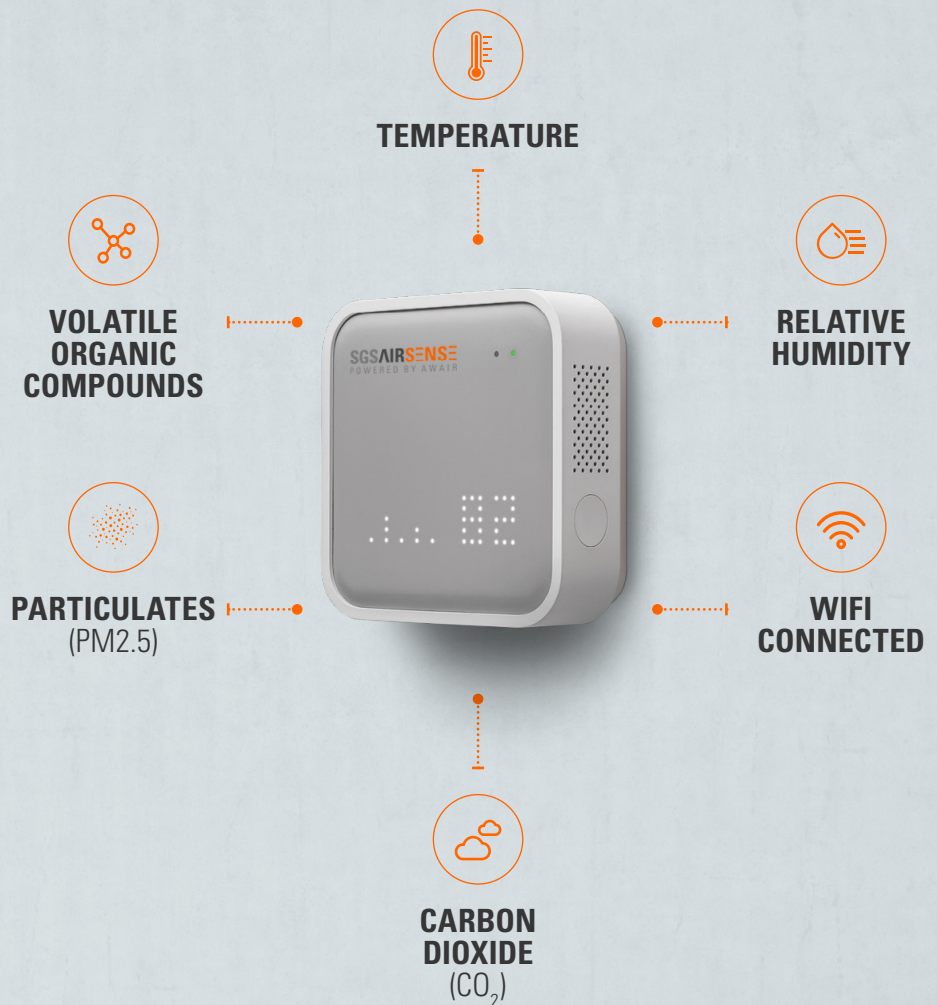


**SGSAIRSENSE**  
POWERED BY AWAIR



**SGS**

# FEATURES



## WHY SGS AIRSENSE?

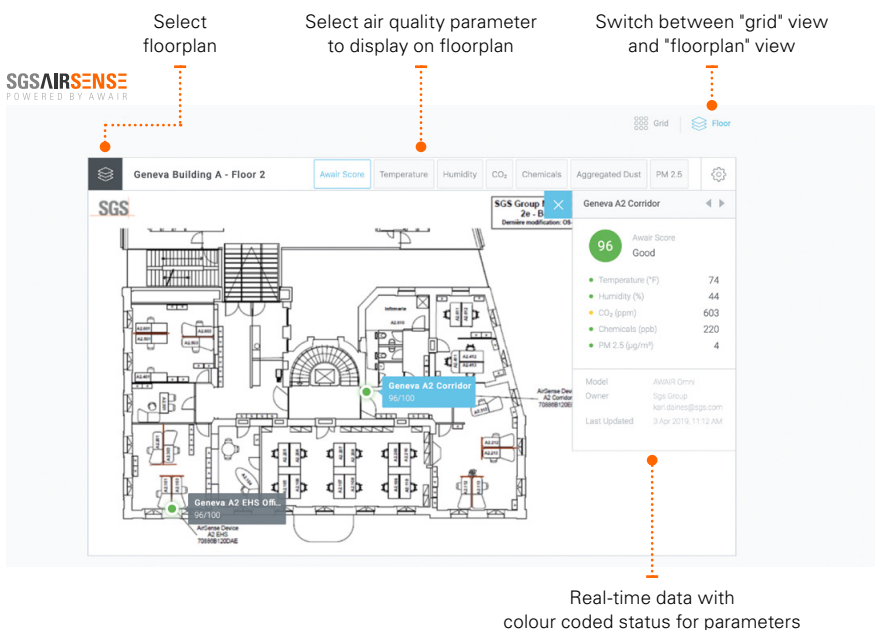
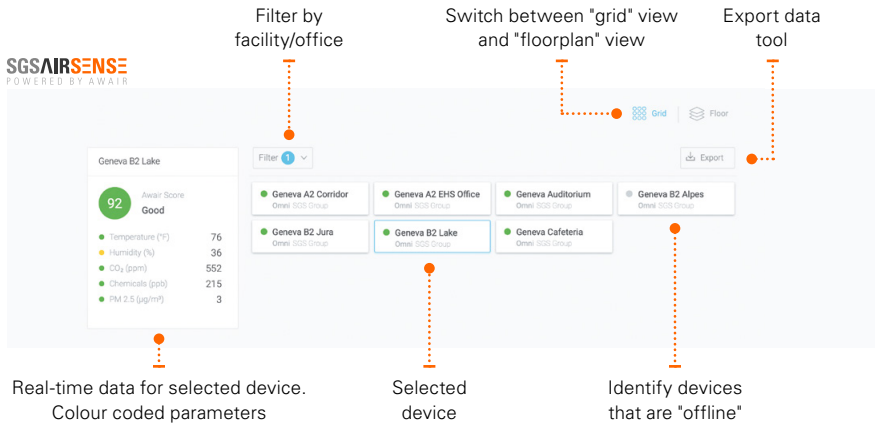
Around the world, people are deploying SGS AirSense to:

- Manage workplace air quality for employees' health and wellbeing
- Promote the air quality in buildings to attract customers
- Maximise building efficiencies and save costs
- Benchmark air quality across multiple facilities
- Incorporate air quality into corporate sustainability goals and key performance indicators

## DEVICE FEATURES

- Access and compare air quality data on the SGS AirSense online dashboard
- View real-time data for every device overlaid on your floorplan
- Receive e-mail notifications when air quality thresholds are exceeded
- Continuous monitoring – data transmitted every 30 seconds
- Mains powered with internal back-up battery
- Connects directly to local Wi-Fi network
- Customisable device display
- RESET Certified Grade B monitors
- High-quality indoor air quality (IAQ) sensors





**SENSOR SPECIFICATIONS**

PARAMETER	DISPLAY UNIT	MEASUREMENT RANGE	PRECISION	SENSOR TYPE
Temperature	°C or °F	-10 to 50 °C	± 0.2 °C	Metal oxide
Relative Humidity	%	0 – 100 %	± 2%	Metal oxide
Carbon Dioxide (CO <sub>2</sub> )	ppm	400 – 5000 ppm	± 10% (max ± 75 ppm)	NDIR
Particulates (pm2.5)	µg/m <sup>3</sup>	1 – 1000 µg/m <sup>3</sup>	± 15% (max ± 15 µg/m <sup>3</sup> )	Optical laser
Vocs	ppb	0.02 – 60 ppm	± 10%	Metal oxide

# AN OFFER THAT MAKES SENSE

- Floorplan review with advice on the number of devices needed and where to install them for optimum coverage
- Supply, installation and ongoing technical support and maintenance of your SGS AirSense monitoring units
- Immediate access to the SGS AirSense dashboard and real-time data feeds
- Data reviews and advanced reporting options from SGS' IAQ experts
- Consulting support for improving IAQ and investigating air quality events and issues

**OUR VALUE TO SOCIETY**

## OPERATE IN THE SUCCESS ZONE

Responding to global drivers, our services add significant value to our customers and stakeholders, so they can add exponential value to theirs. We do this by empowering smarter long-term decision-making throughout entire supply chains.

Present in every region around the globe, we provide innovative solutions for every part of the environmental industry. Our dedicated network of global and local offices is highly flexible and focused on meeting our customers' needs irrespective of the scale of the project.

We have won a number of awards for our own sustainability performance, as we try to lead by example and demonstrate our deeply-held belief that business success and creating value to society go hand-in-hand.

We can help you achieve the same double positive transformation, giving you a competitive advantage and helping you get, and stay, in the Success Zone.

**TO FIND OUT MORE ABOUT SGS ENVIRONMENT HEALTH AND SAFETY SERVICES CONTACT**  
**EHS@SGS.COM OR VISIT**  
**WWW.SGS.COM/EN/ENVIRONMENT**

[WWW.SGS.COM](http://WWW.SGS.COM)

WHEN YOU NEED TO BE SURE

